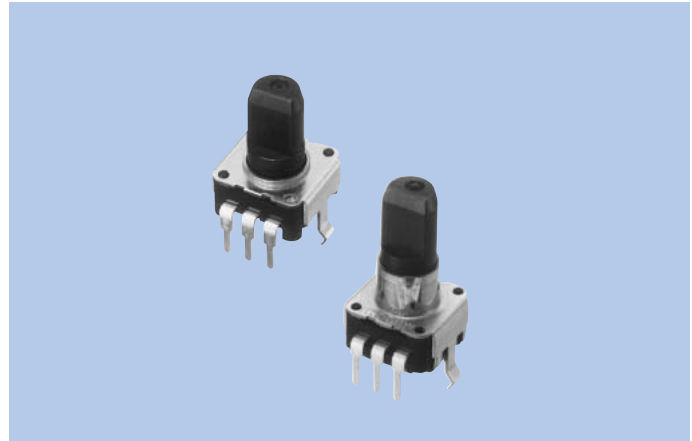


# Rotary Encoder Switches SRP Series

## FEATURES

1. 10×10mm outline size. 5mm in height.  
A small and thin encoder switch with excellent feeling.
2. 12 and 24 detents available with D cut shaft.
3. Permits direct mounting PWB and soldering.

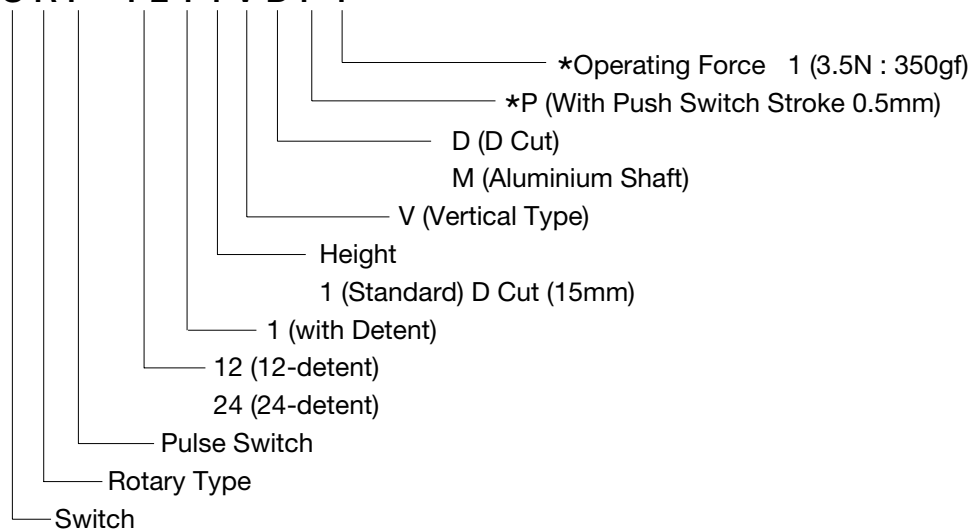


## USES

1. Manual control of digital equipment. For selecting and setting of volume, function and character setting.
2. Tuning and timer setting control of digital circuits.

## MODEL NAME CODE

**S R P - 1 2 1 1 V D P 1**



\*Only applies when there is a push switch, otherwise SRP-1211VD.

## ENCODER SPECIFICATIONS

Electrical Characteristics	Rating	0.5mA, 5V DC
	Contact Resistance	1Ω or less
	Insulation Resistance	10MΩ or more
	Withstand Voltage	1 minute at 50V AC
	Bouncing	3mS or less
Mechanical Characteristics	Rotational torque	10±5mN·m (98±49gf·cm)
Life		40,000cycles

## PUSH SPECIFICATIONS

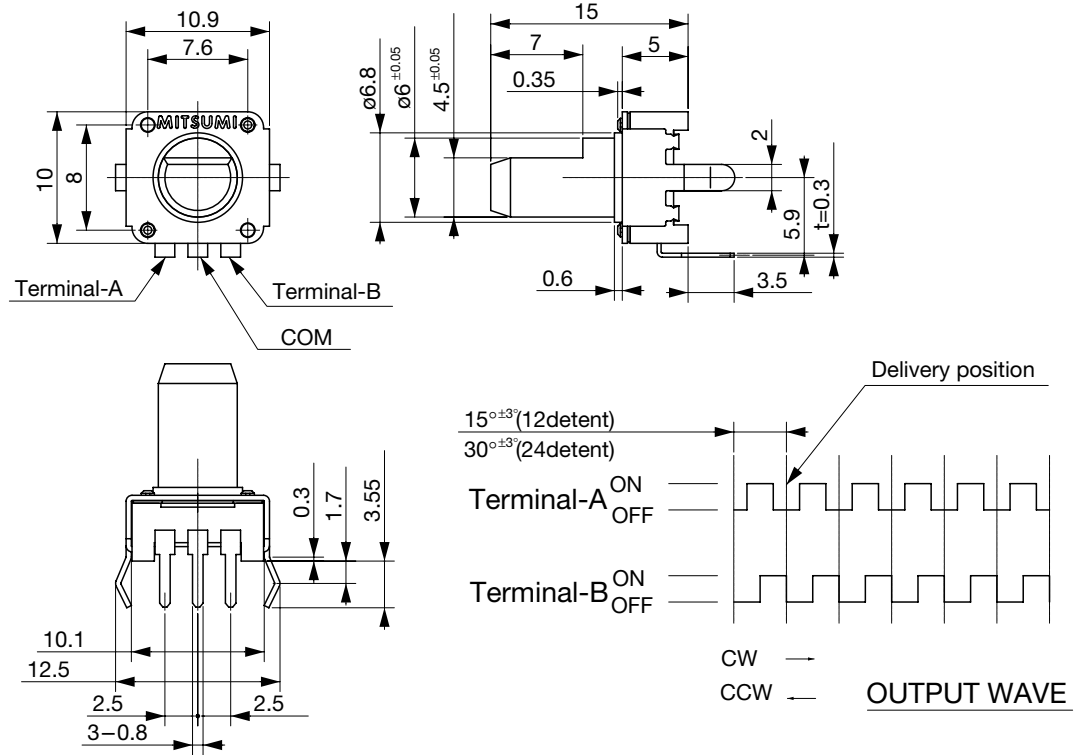
Electrical Characteristics	Rating	DC5V, 0.5mA	
	Contact Resistance	100mΩ or less	
	Insulation Resistance	100MΩ or more	
	Withstand Voltage	1 minute at 50V AC	
	Bouncing	10msec or less	
Mechanical Characteristics	Stroke	VMP1	0.3±0.2mm
		VDP1	0.5±0.3mm
	Operating Force		3.5±1.5N (350±150gf)
Life		50,000cycles	

## TYPE

Model Name Code	Order Number	Shaft Shape	No. of Detent	Rotational Torque	Pcs
SRP-1211VD	R66 5758	D cut	12	10±5mN·m	1,000
SRP-2411VD	R66 5760	D cut	24	10±5mN·m	1,000
SRP-1211VDP1	R66 5827	D cut	12	10±5mN·m	1,000
SRP-2411VDP1	R66 5828	D cut	24	10±5mN·m	1,000
SRP-1211VMP1	R66 6222	D cut	12	10±5mN·m	1,000
SRP-2411VMP1	R66 6223	D cut	24	10±5mN·m	1,000

**DIMENSIONS**

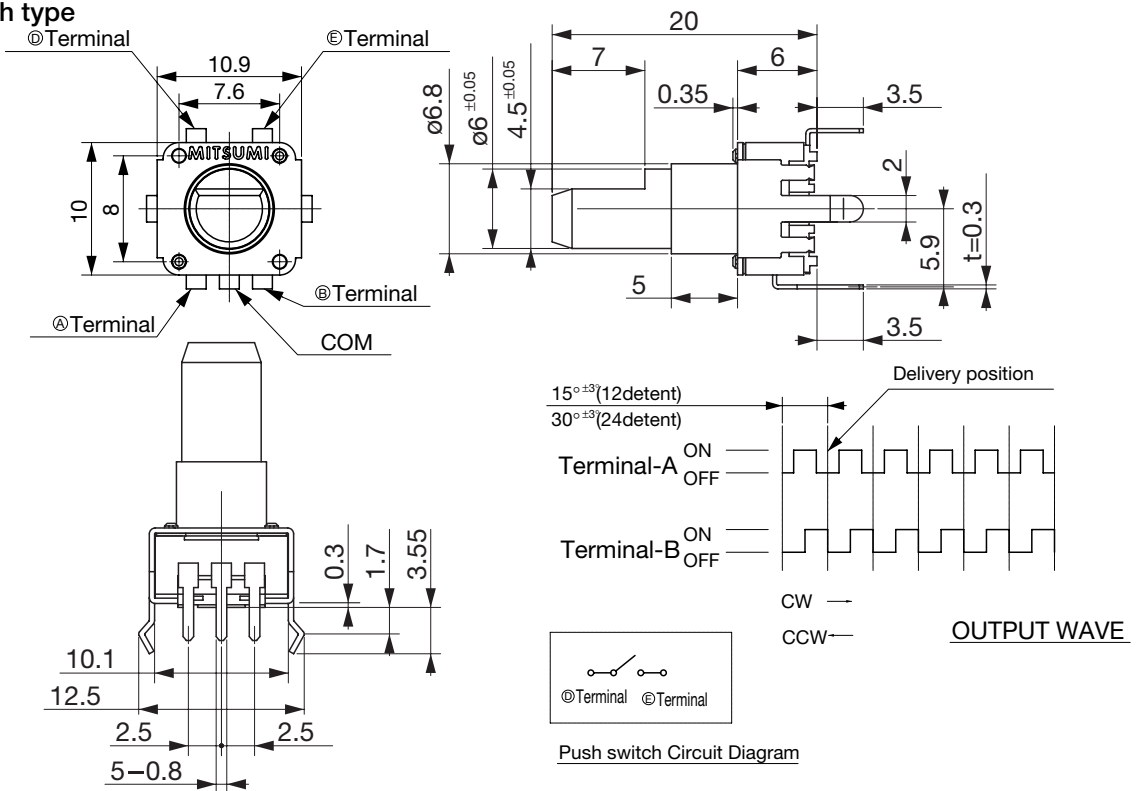
**D cut type**



SRP-1211VD/SRP-2411VD

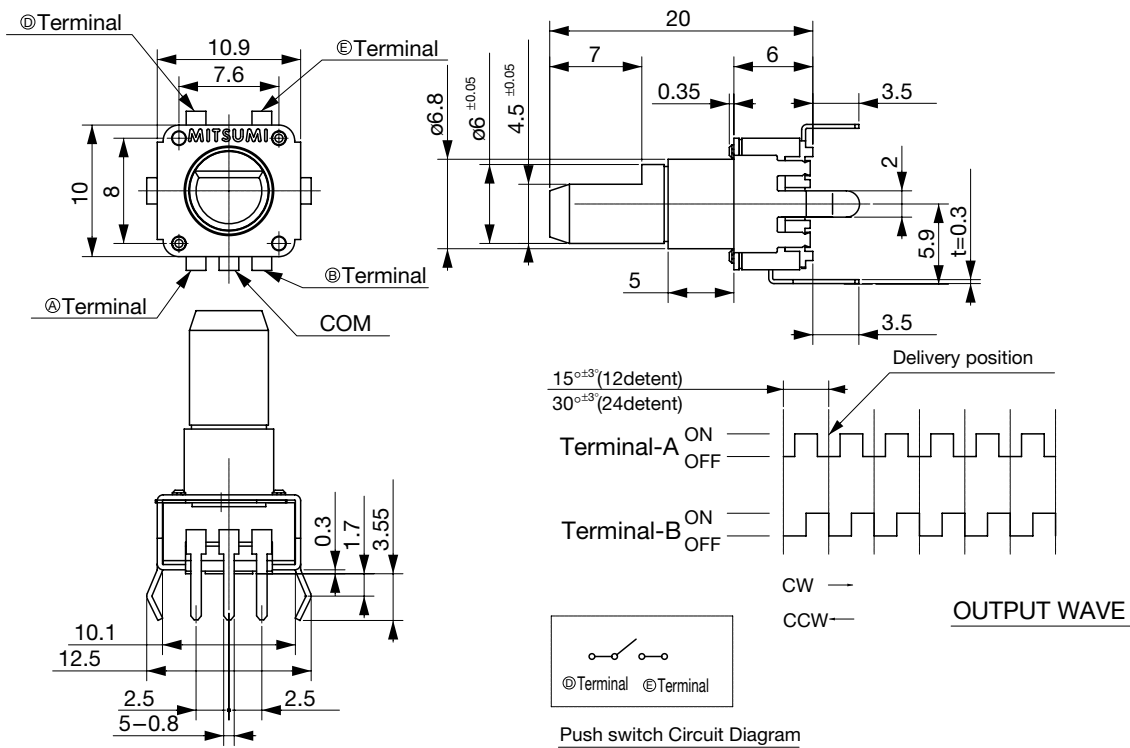
Unit : mm

**Push switch type**



SRP-1211VDP1/SRP-2411VDP1

Unit : mm



SRP-1211VMP1/SRP-2411VMP1

Unit : mm